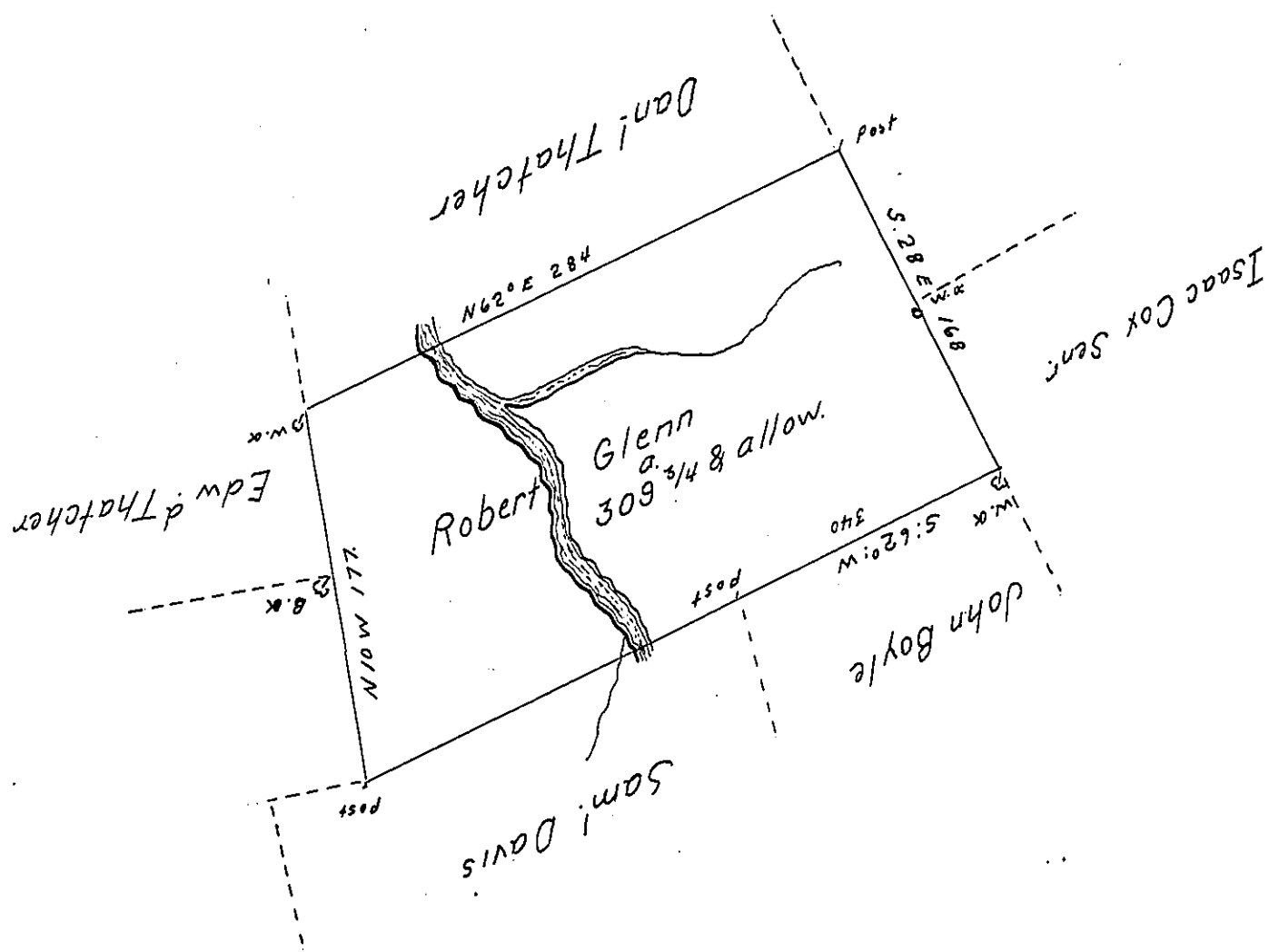


Sug. Loaf -
Luzerne.



A Draught of a Tract of land Called Glensborough. Situate On Nescopeck ^{near} where the path fro (obl.) Fort Allen crosses the Creek and adjoining land Surveyed for John Boyle & others in the Coun (obl.) of Northumberland containing three hundred & Nine Acres and three Quarters besides the usual allowance of 6 p. Cent for Ro (obl.) & la. Surveyed the 8th Day of November 1773 for Robert Gle (obl.). In Pursuance of a Warrant Dated the (obl.)

To John Lukens Es (obl.) by Cha^s Stewart Dy. Sur^r
Surveyor Gen (obl.)

IN TESTIMONY that the above is a copy of the original remaining on file in the Department of Internal Affairs of Pennsylvania, made conformably to an Act of Assembly approved the 16th day of February, 1833, I have hereunto set my Hand and caused the Seal of said Department to be affixed at Harrisburg, this Second day of November 1904.

Isaac P. Brown
Secretary of Internal Affairs.